

cara Mill Sinter

Import of new sinter programm

The following instruction for use describes the import of new/ additional sinter programs by memory stick/import of data sets.

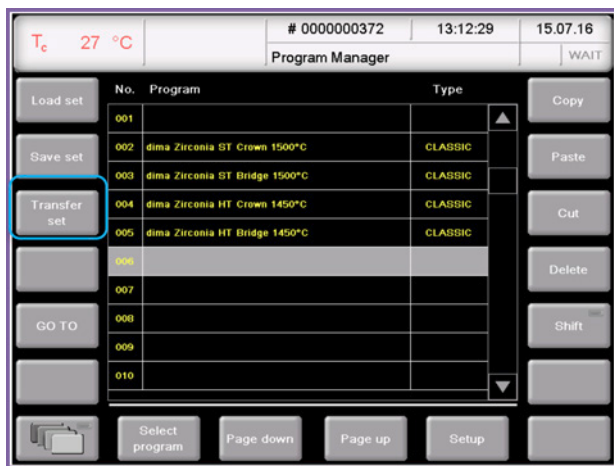
Requirement

- Memory stick with at least 1MB memory space
- Current setup of sinter program
e.g. downloaded from Homepage:
(www.kulzer.com → CAD/CAM → Milling Machine → Downloads → cara Mill Sinter for dima)
- New data set was saved on the memory stick:
dima_Zirconia_(cara Mill Sinter).dds



Connect memory stick to USB-Port panel of the cara Mill Sinter:

The cara Mill Sinter furnace allows to connect two memory sticks to the USB port panel. (backside of the furnace)



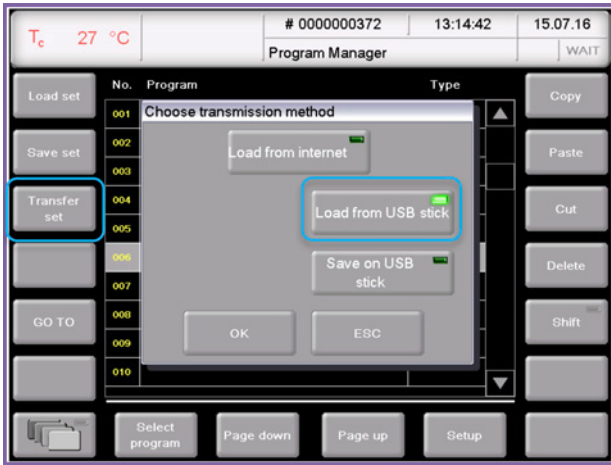
Overview of currently installed sinter programs: (Programs can be different from that view)

On the left side select "Transfer set".

Giving a hand to oral health.



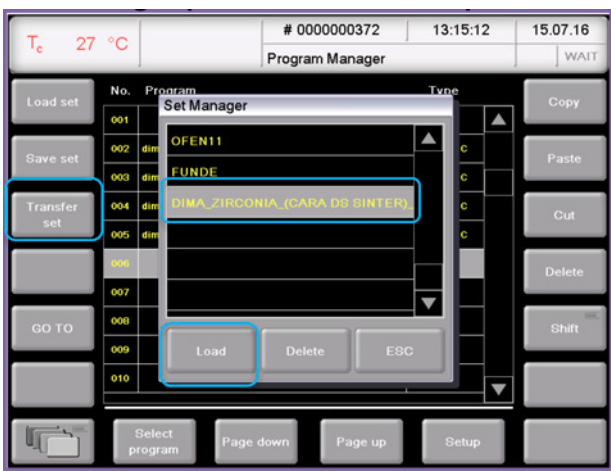
KULZER
MITSUI CHEMICALS GROUP



Choose transmission type

In this respect the USB stick is connected properly you can choose between 2 options:

- Load set from USB



Set Manager (via "Load" from USB)

The set Manager displays the sets stored on the USB.

Please select the last stored set (with the latest programs) there.

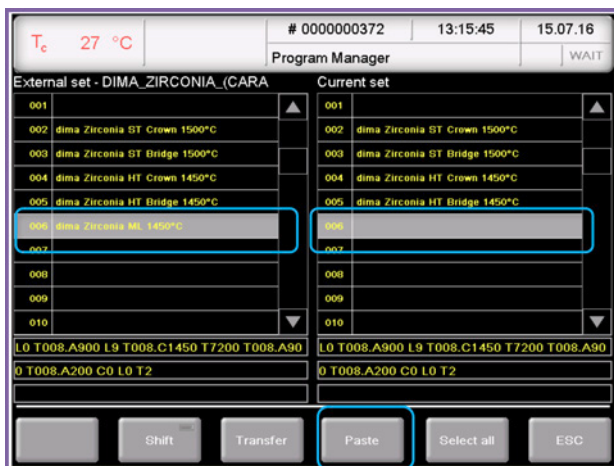
You can then **save** the set "locally" on the sintering furnace,

- 1 or **load** directly from the USB stick.



Set Manager (by the button left side: "Load set") 1

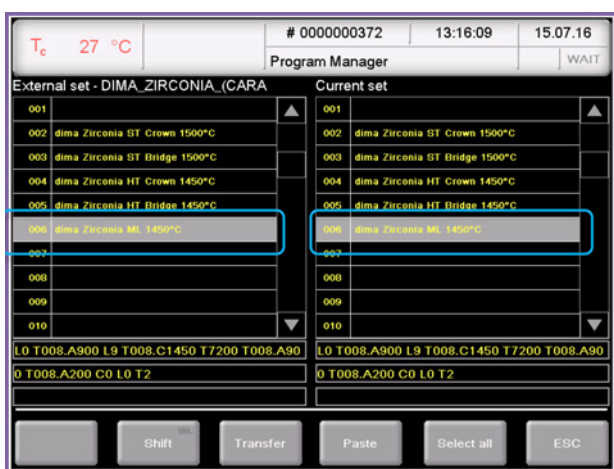
If you locally have saved the set on the sintering furnace you can load the corresponding set next time (also without USB stick). Therefore it is advisable to store the set locally on the furnace. A "delete" or the subsequent "override" of the "set" is possible at any time.



Set Manager

After the set has been loaded (directly from the USB stick or via the button “Load set” locally from the oven) an overview of the current programs (right column) and the set of existing programs (left column) will be shown.

Select the program to be copied (left). In the right column, select the location for the new program.



Set Manager

The program from the set in the current program selection is inserted through the button “Paste”.

Leave the menu by the button “ESC”.

A mark/copy of several program is at the same time by previous press “Shift” possible.

You can move/copy or delete programs on the program main menu

Program overview with the button: “Copy/cut/paste, and/or delete”.



Program overview

Contact in Germany

Kulzer GmbH
 Leipziger Straße 2
 63450 Hanau, Germany
 cara-service@kulzer-dental.com